

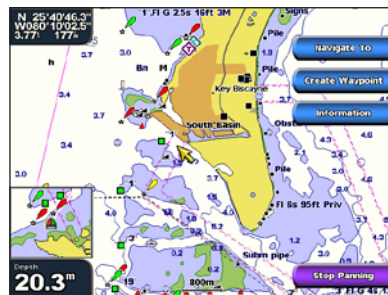
## Creating and Navigating a Route

### Creating and Navigating a Route from Your Present Location

You can create and immediately navigate a route on the Navigation chart or the Fishing chart. This procedure does not save the route or the waypoint data.

**NOTE:** The Fishing chart is available with a preprogrammed BlueChart® g2 Vision® data card.

- From the Home screen, select **Chart**.
- Select **Navigation Chart** or **Fishing Chart**.
- Complete an action:
  - For the GPSMAP 6000 series, use the **Rocker** to select a destination using the cursor (⤴).
  - For the GPSMAP 7000 series, touch a destination using the cursor (⊙).
- Select **Navigate To** > **Route To**.
- Indicate the location where you want to make the last turn toward your destination:
  - For the GPSMAP 6000 series, use the **Rocker** to select a last-turn location using the cursor.
  - For the GPSMAP 7000 series, touch a last-turn location using the cursor.
- Select **Add Turn**.
- If you want to add additional turns, repeat steps 5 and 6, working backward from the destination to the present location of your boat.
- The last turn you add should be where you want to make the first turn from your present location. It should be the turn that is closest to your boat.
- Select **Done** when the route is complete.
- Review the course indicated by the magenta line.
- Follow the magenta line, steering to avoid land, shallow water, and other obstacles.



Destination Selected



Turn Selected



Go To



Guide To (BlueChart g2 Vision)

## Navigating Using a Chart

### Navigating to a Point on a Chart

#### ⚠ CAUTION

The Auto Guidance feature of the Bluechart g2 Vision data card is based on electronic chart information. That data does not assure obstacle and bottom clearance. Carefully compare the course to all visual sightings and avoid any land, shallow water, or other obstacles that may be in your path.

When using Go To, a direct course and a corrected course may pass over land or shallow water. Use visual sightings and steer to avoid land, shallow water, and other dangerous objects.

**NOTE:** The Fishing chart is available with a preprogrammed BlueChart g2 Vision data card.

- From the Home screen, select **Charts**.
- Select **Navigation Chart** or **Fishing Chart**.
- Select where you want to go:
  - For the GPSMAP 6000 series, press the **Rocker** to select the location using the cursor (⤴).
  - For the GPSMAP 7000 series, touch the navigation chart to select the location using the cursor (⊙).
- Select **Navigate To**.
- Complete an action:
  - Select **Go To** to navigate directly to the location.
  - Select **Route To** to create a route to the location, including turns.
  - Select **Guide To** to use Auto Guidance.
- Review the course indicated by the magenta line.
- Follow the magenta line, steering to avoid land, shallow water, and other obstacles.

**NOTE:** When using Auto Guidance, a gray line within any part of the magenta line indicates that Auto Guidance cannot calculate part of the Auto Guidance line. This is due to the minimum safe water depth and the minimum safe obstacle height settings.

**GARMIN**

## GPSMAP® 6000/7000 series quick reference guide



## Turning the Chartplotter On or Off

### ⚠ WARNING

See the *Important Safety and Product Information* guide in the product box for product warnings and other important information.

### Turning On the Chartplotter

Press and release the **Power** key.

### Turning Off the Chartplotter

Press and hold the **Power** key.

## Marking a Waypoint or an MOB Location

### Marking Your Present Location as a Waypoint

From the Home screen, select **Mark**.

### Creating a Waypoint at a Different Location

1. From the Home screen, select **Information** > **User Data** > **Waypoints** > **New Waypoint** > **Move**.
2. Indicate the location of the waypoint:
  - Select **Use Chart** to move the waypoint while viewing a chart. For the GPSMAP 6000 series, use the **Rocker** to select a new location on the chart. For the GPSMAP 7000 series, touch a new location on the chart. Select **Move Waypoint**.
  - Select **Enter Position** to move the waypoint using coordinates. For the GPSMAP 6000 series, use the **Rocker** to enter the coordinates of the new location. For the GPSMAP 7000 series, use the on-screen keyboard. Select **Done**.

### Marking and Navigating to an MOB Location

When you mark a waypoint, you can designate it as a man overboard (MOB) location.

From any screen, select **Mark** > **Man Overboard**.

An international MOB symbol marks the active MOB point and the chartplotter sets a course back to the marked location using the Go To feature.



Man Overboard

## Adjusting the Backlight and the Color Mode

### Adjusting the Backlight

1. From the Home screen, select **Configure** > **System** > **Beeper/Display** > **Backlight** > **Backlight**.
2. Adjust the backlight:
  - Select **Auto** to allow the chartplotter to adjust the backlight automatically, based on ambient light.
  - Select **Up** or **Down** to adjust the backlight manually.

### Adjusting the Color Mode

1. From the Home screen, select **Configure** > **System** > **Beeper/Display** > **Color Mode**.
2. Select **Day Colors**, **Night Colors**, or **Auto**.

## Using Combinations Screens

### Selecting a Combination

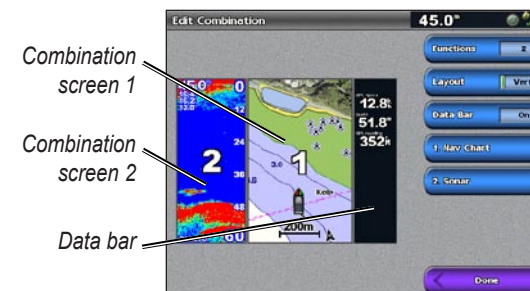
1. From the Home screen, select **Combinations**.
2. Select a combination.

### Customizing the Combinations Screen

**NOTE:** You can choose from only the options available to your chartplotter. To increase the number of screens available, use a BlueChart g2 Vision data card or add network devices such as sonar and radar.

1. From the Home screen, select **Combinations**.
2. Select a combination.
3. Select **Menu** > **Change Combination**.
4. Complete an action:

- Select **Functions** to select the number of combination screens. Select a number.
- Select **Layout** > **Vert.** to arrange the screens in a vertical layout.
- Select **Layout** > **Horiz.** to arrange the screens in a horizontal layout.
- Select **Data Bar** > **On** to show the horizontal bar that contains the data fields.
- Select a numbered option, such as **1. Nav Chart** or **2. Sonar** in the image above, to change the type of information shown in the corresponding screen.



## Navigating to a Marine Service

### Navigating to a Marine Services Destination

#### ⚠ CAUTION

The Auto Guidance feature of the BlueChart g2 Vision data card is based on electronic chart information. That data does not assure obstacle and bottom clearance. Carefully compare the course to all visual sightings and avoid any land, shallow water, or other obstacles that may be in your path.

When using Go To, a direct course and a corrected course may pass over land or shallow water. Use visual sightings and steer to avoid land, shallow water, and other dangerous objects.

**NOTE:** Auto Guidance is available with a preprogrammed BlueChart g2 Vision data card.

1. From the Home screen, select **Where To?** > **Offshore Services**.
2. Select the marine service category to which you want to navigate.

The chartplotter shows a list of the 50 nearest locations and the distance and bearing to each.
3. Select a destination.

**TIP:** Select **Next Page** to view additional information or to show the location on a chart.
4. Select **Navigate To**.
5. Complete an action:
  - Select **Go To** to navigate directly to the location.
  - Select **Route To** to create a route to the location, including turns.
  - Select **Guide To** to use Auto Guidance.
6. Review the course indicated by the magenta line.

**NOTE:** When using Auto Guidance, a gray line within any part of the magenta line indicates that Auto Guidance cannot calculate part of the Auto Guidance line. This is due to the minimum safe water depth and the minimum safe obstacle height settings.
7. Follow the magenta line, steering to avoid land, shallow water, and other obstacles.

Go to [www.garmin.com](http://www.garmin.com) for additional documentation and information.

Garmin®, the Garmin logo, GPSMAP®, BlueChart®, and g2 Vision® are trademarks of Garmin Ltd. or its subsidiaries, registered in the USA and other countries. These trademarks may not be used without the express permission of Garmin.

© 2009 Garmin Ltd. or its subsidiaries

November 2009

Part Number 190-01120-01 Rev. A

Printed in Taiwan

