

Fishfinder 340C Quick Reference



Power On/Off



To turn the Fishfinder 340C on or off:
Press and hold **Power/Backlight** for approximately two seconds.

Adjusting the Backlight

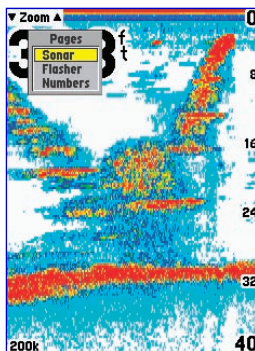


To adjust the backlight:

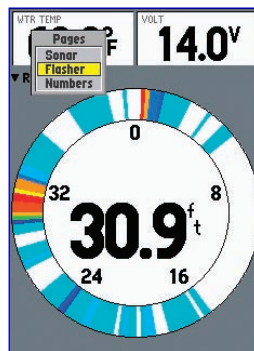
1. Press and release **Power/Backlight** to show the backlight adjustment slider.
2. Press and release **Power/Backlight** repeatedly to cycle through the backlight settings, or use the **Rocker** to change the setting incrementally.
3. Press **ENTER** to accept the new backlight setting.

Main Page Sequence

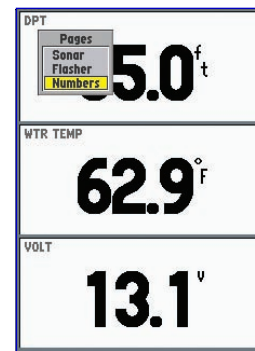
PAGE



Sonar Page



Flasher Page

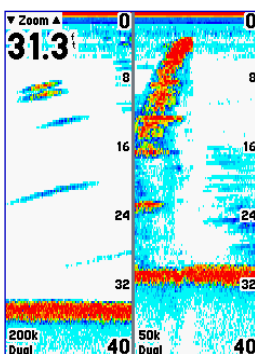


Numbers Page

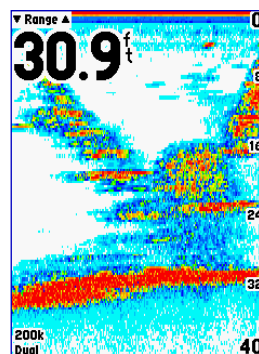
Press **PAGE** to show the Pages Menu. Press **PAGE** repeatedly to cycle through the main pages.

Dual Frequency Page Sequence

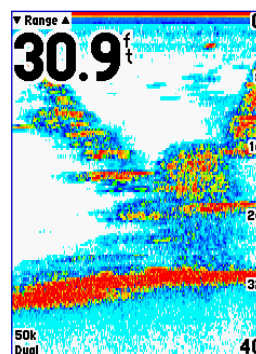
PAGE



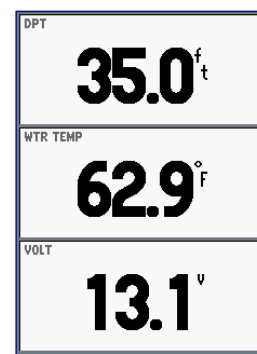
Split Sonar Page













Sonar (200kHz) Page

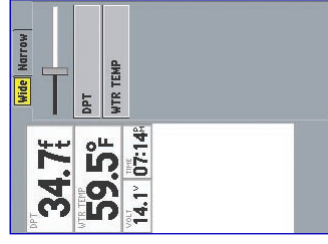
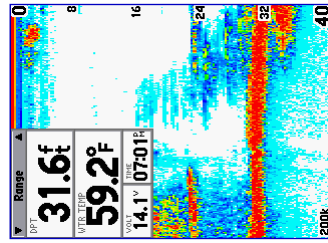
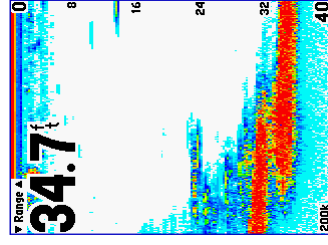


Sonar (50kHz) Page



Numbers Page

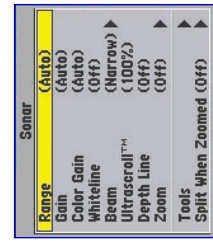
	Power/Backlight —press and hold to turn the unit on or off. Press and release to cycle through the backlight settings.
	RANGE —press to display the Range Menu and select a new Range setting.
	PAGE —press to cycle through the main pages.
	QUIT —press to exit a current menu or configuration option, or to cancel data entry.
	ENTER —press to select a highlighted item, initiate data, entry and accept selected values.
	ADJ/MENU —press and release to show the Adjustment Menu. Press and hold to open the Main Menu.
	GAIN —press to show the Gain Menu. Use the Rocker to change the Gain setting.
	PAUSE —press to pause a Sonar Page. Press and hold for two seconds to enter Pointer mode on a Sonar Page.
	DATA/CNFG —press to toggle the data fields in the upper-left of the screen between basic and advanced configurations. Press and hold for two seconds to enter the Advanced Data Setup Menu.
	Rocker —press to highlight a menu option, enter data, change settings, and control the pointer movement.



Press **DATA/CNFG** to toggle between basic and advanced configurations. Press and hold **DATA/CNFG** to show the Advanced Data Setup Menu. To change a data field, highlight a field and press **ENTER**.

Adjustment Menu

From a Sonar Page or the Flasher Page, press and release **ADJ/MENU** to show the Adjustment Menu. The Adjustment Menu contains selections based on the current page.



To change a setting, use the **Rocker** to highlight a selection, and press **ENTER**. Use the **Rocker** to make a change, and then press **ENTER** to accept the change. Adjustment setting changes are retained when the unit is turned off.

Main Menu

From any page, press and hold **ADJ/MENU** to show the Main Menu. The Main Menu contains unit setup items including settings for the Graph, Sonar, Temp, Alarms, System, Units, and Time.



To view a tab, use the **Rocker** to highlight the tab. To change a setting, use the **Rocker** to highlight a field and press **ENTER**. Use the **Rocker** to make a selection, and press **ENTER** to accept the change. Changes made in the Main Menu are kept in memory and do not change when the unit is turned off.