

# echo™ 100 and echo 150 owner's manual



© 2011 Garmin Ltd. or its subsidiaries

All rights reserved. Except as expressly provided herein, no part of this manual may be reproduced, copied, transmitted, disseminated, downloaded or stored in any storage medium, for any purpose without the express prior written consent of Garmin. Garmin hereby grants permission to download a single copy of this manual onto a hard drive or other electronic storage medium to be viewed and to print one copy of this manual or of any revision hereto, provided that such electronic or printed copy of this manual must contain the complete text of this copyright notice and provided further that any unauthorized commercial distribution of this manual or any revision hereto is strictly prohibited.

Information in this document is subject to change without notice. Garmin reserves the right to change or improve its products and to make changes in the content without obligation to notify any person or organization of such changes or improvements. Visit the Garmin Web site ([www.garmin.com](http://www.garmin.com)) for current updates and supplemental information concerning the use and operation of this and other Garmin products.

Garmin® and the Garmin logo are trademarks of Garmin Ltd. or its subsidiaries, registered in the USA and other countries. echo™ is a trademark of Garmin Ltd. or its subsidiaries. These trademarks may not be used without the express permission of Garmin.

## Introduction

### **WARNING**

See the *Important Safety and Product Information* guide in the product box for product warnings and other important information.

This manual includes information for the echo™ 100 and echo 150 fishfinders.

## Manual Conventions

In this manual, the term “select” is used to describe these actions:

- Highlighting an item in a menu and pressing **ENTER**.
- Pressing a key, such as **ENTER** or **MENU**.

When you are instructed to select menu items, small arrows (>) may appear in the text. They indicate that you should highlight a series of items on the screen using **▲** or **▼** keys (page 2), and press the **ENTER** key after each item. For example, if you see “select **MENU** > **Pause**,” you should press **MENU**, press **▲** or **▼** until **Pause** is highlighted, and then press **ENTER**.

## Registering Your Device

Help us better support you by completing our online registration today.

- Go to <http://my.garmin.com>.
- Keep the original sales receipt, or a photocopy, in a safe place.

## Contacting Garmin Product Support

Contact Garmin Product Support if you have any questions about this product.

- In the USA, go to [www.garmin.com/support](http://www.garmin.com/support), or contact Garmin USA by phone at (913) 397.8200 or (800) 800.1020.
- In the UK, contact Garmin (Europe) Ltd. by phone at 0808 2380000.
- In Europe, go to [www.garmin.com/support](http://www.garmin.com/support) and click **Contact Support** for in-country support.

## Getting Started

### Keys



<b>MENU</b>	Displays a list of options or returns you to your previous screen.
<b>ENTER</b>	Selects a menu item.
<b>▲ ▼</b>	Scrolls through options or changes settings.
<b>⏻</b>	Turns the device on or off and adjusts the backlight.

### Turning On and Turning Off the Device

Press and hold **⏻**.

### Configuring the Initial Device Settings

Before you can use the device the first time, you must configure a series of initial settings. You must also configure these settings when restoring original factory settings. You can update each of these settings later.

1. Select a language.
2. Select the units in which to measure depth.
3. Select the units in which to measure temperature.
4. Select **Done**.

### Adjusting the Contrast

1. From the Sonar screen, select **MENU > Setup > System > Contrast**.
2. Select **▲** or **▼**.
3. Select **ENTER**.

### Adjusting the Backlight


1. Press and quickly release **⏻**.
2. Repeat to cycle through the brightness settings.

## Setting the Beeper

You can set when the device makes audible sounds.

1. From the Sonar screen, select **MENU > Setup > Alarms > Beeper**.
2. Select an option:
  - To have the device beep when you select an item and when an alarm is triggered, select **On**.
  - To have the device beep only when alarms are triggered, select **Alarms Only**.

## Turning On the Device Automatically

You can set the device to turn on when power is applied. Otherwise, press  to turn on the device.

From the Sonar screen, select **MENU > Setup > System > Auto Power > On**.

## Menu Timeout

After a menu appears for 20 seconds and no keys are selected, the menu disappears and your previous screen is displayed.

## Using Quick Adjust

After adjusting a setting and returning to the Sonar screen, you can quickly return to the setting options.

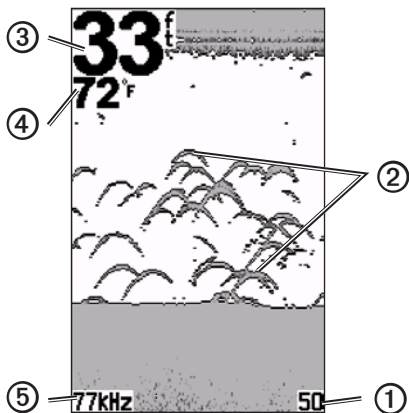
After returning to the Sonar screen, select **▲** or **▼**.

## Using the echo 100 and echo 150

### Sonar Screen

The sonar screen shows a full-view graph of sonar readings from a transducer. The depth scale ① indicated on the right of the screen shows the screen depth as the screen scrolls from the right to the left, indicating suspended targets ②. Bottom depth ③, water temperature ④ (if a temperature-capable transducer is connected), and transducer frequency ⑤ are indicated on the left side of the screen.

**NOTE:** The echo 100 operates only at 200 kHz, so the frequency is not displayed on the screen.



### Adjusting the Range of the Depth Scale

You can adjust the range of the depth scale that appears on the right side of the screen. This setting determines how deep the sonar will search for returns.

1. From the Sonar screen, select **MENU > Range**.
2. Select an option:
  - To allow the device to adjust the range automatically based on the depth, select **Auto**.
  - To increase or decrease the range of the depth scale manually, select **Manual**, select **▲** or **▼**, then select **ENTER**.

### Adjusting the Zoom on the Sonar Screen Manually

You can manually adjust the zoom of the Sonar screen by selecting the span of the view and selecting a fixed starting depth. For example, if you select a span of 15 feet and a starting depth of 5 feet, the device will display an area from 5 feet deep to 20 feet deep.

1. From the Sonar screen, select **MENU > Zoom > Manual**.
2. Select the span you would like to show.
3. Select the starting depth.

## Adjusting the Zoom on the Sonar Screen Automatically

You can adjust the zoom of the Sonar screen by selecting the span of the view and locking the screen to the contour of the water bottom. For example, if you select a span of 10 meters, the device will display an area from the water bottom to 10 meters above the bottom.

1. From the Sonar screen, select **MENU > Zoom > Auto**.
2. Select the span you would like to show.

## Pausing the Screen

From the Sonar screen, select **MENU > Pause**.

## Resuming the Screen

After pausing the sonar screen, select **MENU > Resume**.

## Setting the Gain Manually

The gain setting controls the sensitivity of the sonar receiver to compensate for water depth and water clarity. To see more detail, increase the gain. If the screen is cluttered, decrease the gain.

To set the gain manually, increase the gain setting until you begin to see “noise” in the water portion of the screen, then slightly decrease the gain.

1. From the Sonar screen, select **MENU > Gain > Manual**.
2. Select ▲ to increase the gain setting until you begin to see noise in the water portion of the screen.
3. Select ▼ to decrease the gain.

## Setting the Gain to Auto

1. From the Sonar screen, select **MENU > Gain**.
2. Select an option:
  - To display the sonar screen with higher sensitivity and to show weaker signals and more noise, select **Auto-High**.
  - To display the sonar screen with normal sensitivity, select **Auto-Med**.
  - To display the sonar screen with lower sensitivity and less noise, select **Auto-Low**.

## Setting the Shallow Water and Deep Water Alarms

You can set an alarm to sound when the depth is shallower or deeper than a specified value.

1. From the Sonar screen, select **MENU > Setup > Alarms**.
2. Select an option:
  - To sound an alarm when the depth is shallower than the specified depth, select **Shallow > On**.
  - To sound an alarm when the depth is deeper than the specified depth, select **Deep > On**.
3. Select the depth that triggers the alarm.

The alarm setting appears on the Alarms screen.

## Setting the Battery Voltage Alarm

You can set an alarm to sound when the battery reaches a specified low voltage.

1. From the Sonar screen, select **MENU > Setup > Alarms > Battery > On**.

2. Select the low battery voltage that triggers the alarm.

The alarm setting appears on the Alarms screen.

## Setting Fish Alarms

You can set an alarm to sound when the device detects a suspended target.

From the Sonar screen, select **MENU > Setup > Alarms > Fish > On**.

## Setting the Sonar Scroll Speed

You can set the rate at which the sonar scrolls from right to left.

Use a higher scroll speed to see more detail, especially while moving or trolling. Use a lower scroll speed to display the sonar information on the screen longer.

1. From the Sonar screen, select **MENU > Setup > Sonar > Scroll**.

2. Select a scroll speed.

## Selecting a Frequency for the echo 150

When using a dual-beam transducer, you can select a frequency of 200 kHz or 77 kHz for the echo 150.

**NOTE:** The echo 100 operates only at 200 kHz.

You can show data from a 200 kHz sonar signal or data from a 77 kHz sonar signal. The 200 kHz frequency shows better detail, has a narrower beam, and is typically used in shallower waters. The 77 kHz frequency penetrates deep water more effectively and has a wider beam, so it can be used to cover a larger area.

1. From the Sonar screen, select **MENU > Setup > Sonar > Frequency**.





2. Select a frequency.

## Configuring the Appearance of Suspended Targets

You can set how the sonar interprets suspended targets.

1. From the Sonar screen, select **MENU > Setup > Sonar > Fish ID**.

2. Select an option:

- To show suspended targets as symbols, select .
- To show suspended targets as symbols with target depth information, select .
- To show suspended targets as symbols with background sonar information, select .
- To show suspended targets as symbols with background sonar information and target depth information, Select .



## Appendix

### Specifications

Specification	Measurement
Display	4 in. (102 mm) diagonal, 256 × 160 pixels, 8-level gray
Temperature Range	From 5°F to 158°F (from -15°C to 70°C)
Compass Safe Distance	10 in. (250 mm)
Frequency	echo 100: 200 kHz echo 150: 77 kHz or 200 kHz
Power Source Voltage Range	10–20 Vdc
Fuse	AGC/3AG - 3.0 A
Freshwater Depth*	echo 100: 600 ft. (183 m) echo 150: 1300 ft. (396 m)
Saltwater Depth*	echo 100: 300 ft. (91 m) echo 150: 500 ft. (152 m)

\*Depth capacity is dependent on water salinity, bottom type, and other water conditions.

### Transducer Beam Angles

The transducer provided with the echo 100 has a beam angle of 15 degrees at 3dB. The transducer provided with the echo 150 has beam angles of 15 and 45 degrees at 3dB. However, when these transducers are used with the echo device, they can detect the smallest signals up to 60 degrees for the echo 100 and up to 60 and 120 degrees for the echo 150. Shallow and deep water performance is maximized because the echo series shows more fish when shallow, and reaches deep to show structure and bottom contours.

### Viewing System Information

From the Sonar screen, select **MENU > Setup > System > System Information**.

### Setting the Language

1. From the Sonar screen, select **MENU > Setup > System > Language**.
2. Select the language.

### Cleaning the Outer Casing

#### **NOTICE**

Avoid chemical cleaners and solvents that can damage plastic components.

1. Clean the outer casing of the device (not the screen) using a cloth dampened with a mild detergent solution.
2. Wipe the device dry.

### Cleaning the Screen

Use a soft, clean, lint-free cloth. If necessary, use water, isopropyl alcohol, or eyeglass lens cleaner.

1. Apply the liquid to the cloth.
2. Gently wipe the screen with the cloth.

## Setting the Units of Measure

1. From any page, select **MENU > Setup > Units**.
2. Select an option:
  - Select **Depth**, and select **Feet**, **Meters**, or **Fathoms**.
  - Select **Temp.**, and select **Fahrenheit** or **Celsius**.

## Restoring the Original Factory Settings

**NOTE:** This procedure deletes all settings information you have entered.

From any page, select **MENU > Setup > System > Factory Settings > Yes**.

## Software License Agreement

BY USING THE ECHO 100 OR ECHO 150, YOU AGREE TO BE BOUND BY THE TERMS AND CONDITIONS OF THE FOLLOWING SOFTWARE LICENSE AGREEMENT. PLEASE READ THIS AGREEMENT CAREFULLY.

Garmin Ltd. and its subsidiaries (“Garmin”) grant you a limited license to use the software embedded in this device (the “Software”) in binary executable form in the normal operation of the product. Title, ownership rights, and intellectual property rights in and to the Software remain in Garmin and/or its third-party providers.

You acknowledge that the Software is the property of Garmin and/or its third-party providers and is protected under the United States of America copyright laws and international copyright treaties. You further acknowledge that the structure, organization, and code of the Software, for which source code is not provided, are valuable trade secrets of Garmin and/or its third-party providers and that the Software in source code form remains a valuable trade secret of Garmin and/or its third-party providers. You agree not to decompile, disassemble, modify, reverse assemble, reverse engineer, or reduce to human readable form the Software or any part thereof or create any derivative works based on the Software. You agree not to export or re-export the Software to any country in violation of the export control laws of the United States of America or the export control laws of any other applicable country.





© 2011 Garmin Ltd. or its subsidiaries

Garmin International, Inc.  
1200 East 151<sup>st</sup> Street, Olathe, Kansas 66062, USA

Garmin (Europe) Ltd.  
Liberty House, Hounslow Business Park, Southampton, Hampshire, SO40 9LR UK

Garmin Corporation  
No. 68, Zhangshu 2<sup>nd</sup> Road, Xizhi Dist., New Taipei City, 221, Taiwan (R.O.C.)

[www.garmin.com](http://www.garmin.com)