

-1 STC CONFIGURATION GENERAL ARRANGMENT DRAWING

NOTES:

1. STC REQUIREMENTS:  
REFER TO GARMIN DRAWING 005-00400-01 MASTER DRAWING LIST FOR THIS STC.  
  
THE FOLLOWING ARE PREREQUISITE OR CONCURRENT REQUIREMENTS FOR THIS STC INSTALLATION:  
  
-STC #SA01254WI (REFER TO MASTER DRAWING LIST 005-C0004-00 FOR DETAILS)  
-STC #SA01389WI (REFER TO MASTER DRAWING LIST 005-00336-01 FOR DETAILS)  
  
WITH THIS STC INSTALLED, THIS GENERAL ARRANGEMENT DRAWING SUPERCEDES ALL PREVIOUS G1000/GFC700 LRU SOFTWARE AND HARDWARE DEFINITIONS, INCLUDING THE FOLLOWING DRAWINGS:  
005-00336-14 - GENERAL ARRANGMENT DRAWING FOR G1000/GFC700  
005-00149-28 - REQUIRED EQUIPMENT LIST FOR G1000 IN DIAMOND DA40  
005-00305-00 - REQUIRED EQUIPMENT LIST FOR G1000 IN DIAMOND DA40
2. REMOVE EXISTING GIA 63 LRUS (QTY 2) AND REPLACE WITH GIA 63W LRUS (ITEMS 3, 4 IN TABLE A). REUSE EXISTING RACKS, CONNECTORS, AND WIRING. REFER TO VIEW C-C ON SHEET 6.
3. REMOVE EXISTING GA56 GPS ANTENNAS AND REPLACE WITH GA35 GPS/WAAS ANTENNAS. INSTALL TNC COAXIAL CONNECTORS ON EXISTING COAXIAL CABLING. REFER TO SHEETS 3 AND 5 FOR INSTALLATION DETAILS AND MATERIALS LIST.
4. INSTALLATION OPTION: IF COUPLED VNAV OPERATION IS DESIRED, REMOVE EXISTING GDU 1042 MFD AND REPLACE WITH GDU 1044 MFD (ITEM 2 OF TABLE A). REUSE EXISTING MFD CONNECTOR 2P100001 ASSEMBLY AS IS. REFER TO VIEW A-A ON SHEETS 3 AND 4.
5. ALL OTHER G1000 LRUS REMAIN AS INSTALLED PER STC #SA01254WI. FOR DETAILED INSTALLATION INFORMATION, SEE 005-00304-00.
6. SERVOS REMAIN AS INSTALLED PER STC #SA01389WI. FOR SERVO INSTALLATIONS REFER TO THE FOLLOWING DRAWINGS:  
-PITCH TRIM SERVO INSTALLATION DRAWING, 005-00336-19  
-ROLL SERVO INSTALLATION DRAWING, 005-00336-18  
-PITCH SERVO INSTALLATION DRAWING, 005-00336-17
7. INSTALL RESISTOR ASSEMBLY PER RESISTOR INTALLATION DRAWING, 005-00400-12. RESISTOR WIRING IS PER 005-00400-13.
8. AFTER COMPLETING WAAS HARDWARE INSTALLATION, PERFORM POST INSTALLATION CHECKOUT PROCEDURE, 190-00544-02. NOTE THAT WITH THIS STC INSTALLED, THE 190-00544-02 PICP SUPERCEDES ALL PREVIOUS VERSIONS AND REVISIONS OF CHECKOUT DOCUMENTATION, INCLUDING P/N 190-00544-00, 190-00492-02, AND 190-00303-06.
9. -1 STC CONFIGURATION G1000/GFC 700 HARDWARE/SOFTWARE DEFINITION SHOWN IN TABLE A.
10. WEIGHT & BALANCE CHANGE FOR THIS STC IS NEGLIGIBLE.

REVISIONS			
REV	DESCRIPTION	DATE	ECO No.
5	CORRECT GPS1 ANTENNA LABEL	03/20/07	43888
6	UPDATE SOFTWARE TABLE	05/02/07	44962
7	CORRECT GA35 SCREW P/N	10/03/07	47841

**STC DRAWING  
DER REVIEW REQUIRED**

<b>CONFIDENTIAL</b> <small>This drawing and the specifications contained herein are the property of Garmin Ltd. or its subsidiaries and may not be reproduced or used in whole or in part as the basis for manufacture or sale of products without written permission.</small>		<b>GARMIN®</b> <small>Garmin Ltd. or its subsidiaries c/o Garmin International, Inc. 1200 E. 151st Street Olathe, Kansas 66062 U.S.A.</small>	
		TITLE GENERAL ARRANGEMENT G1000/GFC 700, WAAS, DIAMOND DA40/40F	
		DATE	REV.
		12/13/06	7
		DWG. NO. 005-00400-10	
		SIZE	SHT. 1 OF 6
		B	DER REVIEW REQD
		SCALE	
		NTS	
TOLERANCE UNLESS NOTED OTHERWISE ENGLISH UNITS .XX ± .010 .XXX ± .005 HOLES ± .003 METRIC UNITS .X ± .25 .XX ± .13 HOLES ± .08 ANGLES +/- 0.5°		DRWN. DCC CHKD. RJC RLS BY DCC PROJ. SMP MGR. SMP	

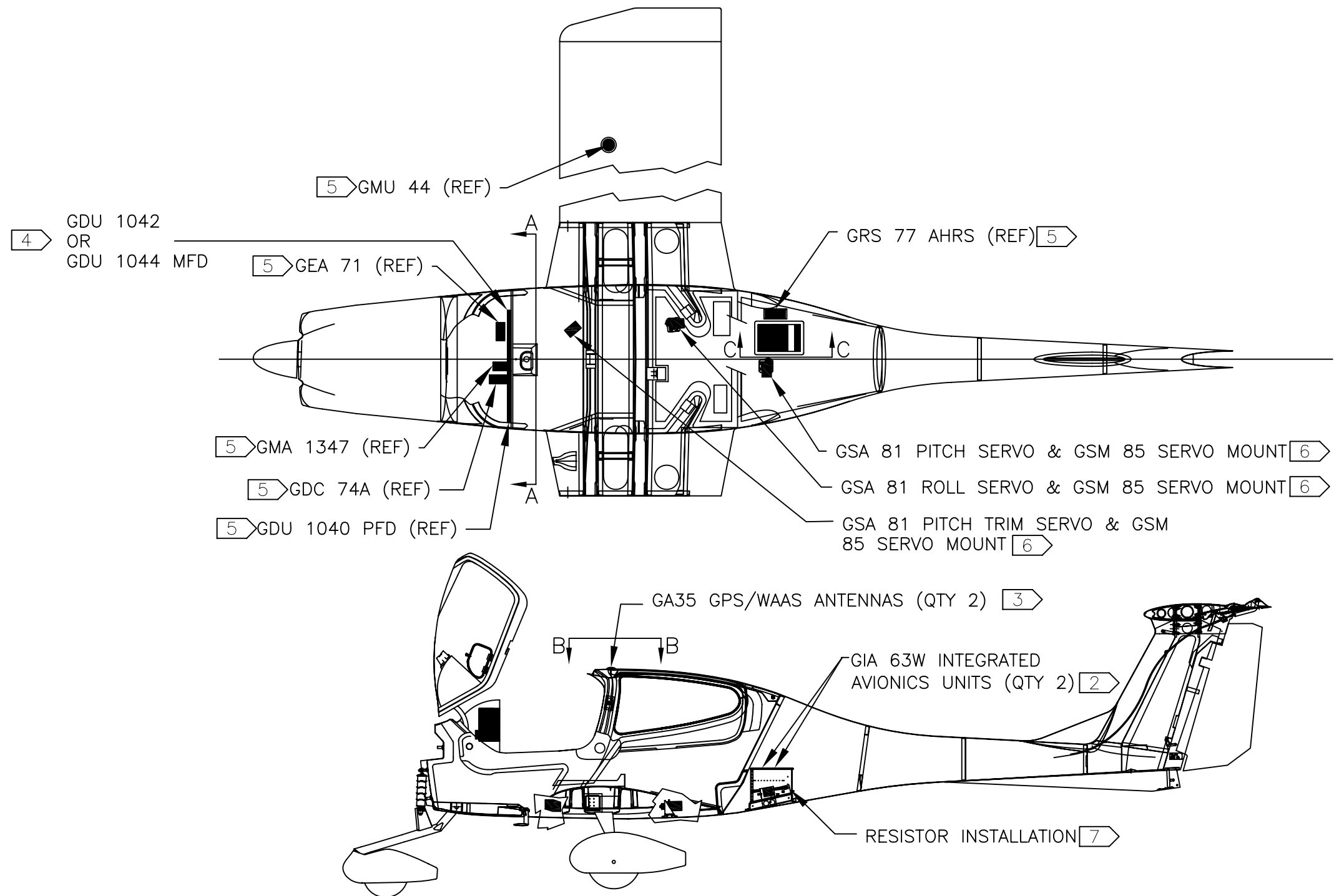
-1 STC Configuration Hardware/Software Definition					
010-00369-13 - G1000/GFC700 in Diamond DA 40 Software Card					
Loader Card Contains:	G1000/GFC 700 Software Bundle (See Below For Breakdown)	006-B0321-15	0369.13		
	Diamond DA40 Aircraft Configuration Index	006-D0201-17	2.15		
	GFC 700/DA40 Certification Gains	006-D0577-02	2.02		
006-B0321-15 - G1000 System Software Version 0369.13					
Item #	Description	Compatible LRU Part Numbers	System Status Page Display (Configuration Mode)	Software Part Number	Software Version
1	GDU 1040 PFD	011-00972-00 OR 011-00972-03	PFD1	006-B0319-62	8.02
			PFD1 FPGA	006-C0036-03	1.03
2	GDU 1042 MFD OR GDU 1044 MFD	011-01080-00 OR 011-01078-01	MFD1	006-B0319-62	8.02
			MFD1 FPGA	006-C0036-03	1.03
3	GIA 63W #1 Integrated Avionics Unit	011-01105-00	GIA1	006-B0544-24	5.31
			GPS1	006-B0339-04	2.40
			GIA1 AUDIO	006-D0425-02	2.02
			GFC CERT GIA1	006-D0577-02	2.02
4	GIA 63W #2 Integrated Avionics Unit	011-01105-00	GIA2	006-B0544-24	5.31
			GPS2	006-B0339-04	2.40
			GIA2 AUDIO	006-D0425-02	2.02
			GFC CERT GIA2	006-D0577-02	2.02
5	GMA 1347 Audio Panel	011-00809-00	GMA1	006-B0203-33	3.03
6	GRS 77 AHRS	011-00868-10	GRS1	006-B0223-08	2.10
			GRS1 FPGA	006-C0049-00	2.00
7	GMU 44 Magnetometer	011-00870-00	GMU1	006-B0224-00	2.01
			GMU1 FPGA	006-C0048-00	2.00
8	GDC 74A Air Data Computer	011-00882-00	GDC1	006-B0261-03	2.05
			GDC1 FPGA	006-C0055-00	1.05
9	GEA 71 Engine/Airframe Unit	011-00831-00	GEA1	006-B0193-05	2.07
10	GTX 33 Mode S Transponder	011-00779-00 OR 011-00779-10	GTX1	006-B0172-XX	4.06
11	GDL 69 Data Link	Ref Diamond OAM 40-213/a or later revision.	GDL69	006-B0317-13	3.10
12	GSA 81 Pitch Servo	011-00878-00	GSA PTCH C - GIA1 GSA PTCH M -GIA1	006-B0398-13	2.06
			GFC CERT P C GFC CERT P M	006-D0577-02	2.02
13	GSA 81 Pitch Trim Servo	011-00878-00	GSA PTCH TRM C - GIA1 GSA PTCH TRM M -GIA1	006-B0398-13	2.06
			GFC CERT PT C GFC CERT PT M	006-D0577-02	2.02
14	GSA 81 Roll Servo	011-00878-00	GSA ROLL C - GIA1 GSA ROLL M -GIA1	006-B0398-13	2.06
			GFC CERT R C GFC CERT R M	006-D0577-02	2.02

9 TABLE A – SOFTWARE & EQUIPMENT LIST

ITEM	P/N	Installation Requirement
Terrain/Obstacle/Safe Taxi Database Card	010-00330-42	QTY 2 Required for all installations. Refer to PICP.
Chartview Unlock Card	010-00330-53	OPTIONAL - Required to activate ChartView option. Refer to PICP.
TAWS Unlock Card	010-00330-51	OPTIONAL - Required to activate TAWS option. Refer to PICP.
GIA 63 Boot Block Update Card	010-00533-00	Refer to PICP. Only required to update GIA 63 boot block.

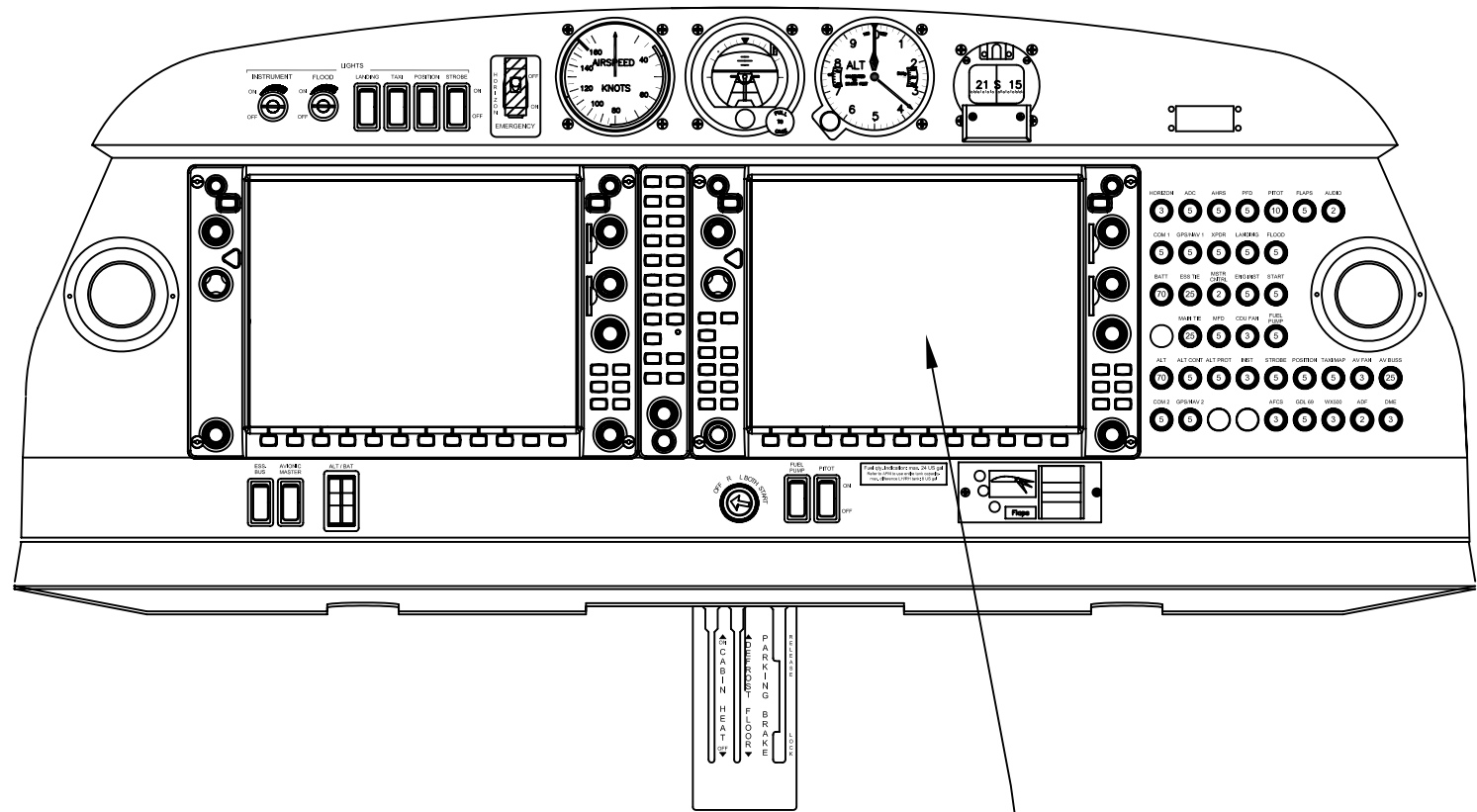
TABLE B – MISC. DATA CARDS

<b>GARMIN®</b> Garmin Ltd. or its subsidiaries c/o Garmin International, Inc. 1200 E. 151st Street Olathe, Kansas 66062 U.S.A.		
SIZE <b>B</b>	DWG. NO. 005-00400-10	REV. 7
SCALE NTS	DER REVIEW REQD	SHT. 2 OF 6



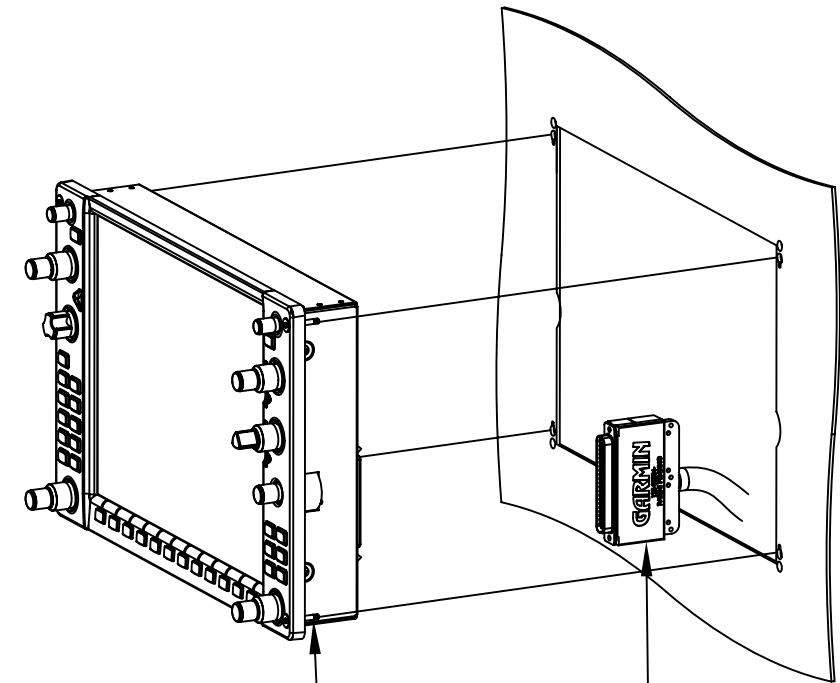
**GARMIN**® Garmin Ltd. or its subsidiaries  
c/o Garmin International, Inc.  
1200 E. 151st Street  
Olathe, Kansas 66062 U.S.A.

SIZE <b>B</b>	DWG. NO. 005-00400-10	REV. 7
SCALE NTS	DER REVIEW REQD	SHT. 3 OF 6



VIEW A-A  
 GDU 1044 INSTALLATION  
 (OPTIONAL)

4 INSTALLATION OPTION:  
 REMOVE EXISTING GDU 1042 MFD AND  
 REPLACE WITH GDU 1044 MFD, ITEM 2  
 (REF TABLE A, SHEET 2). USE EXISTING  
 CONNECTOR.

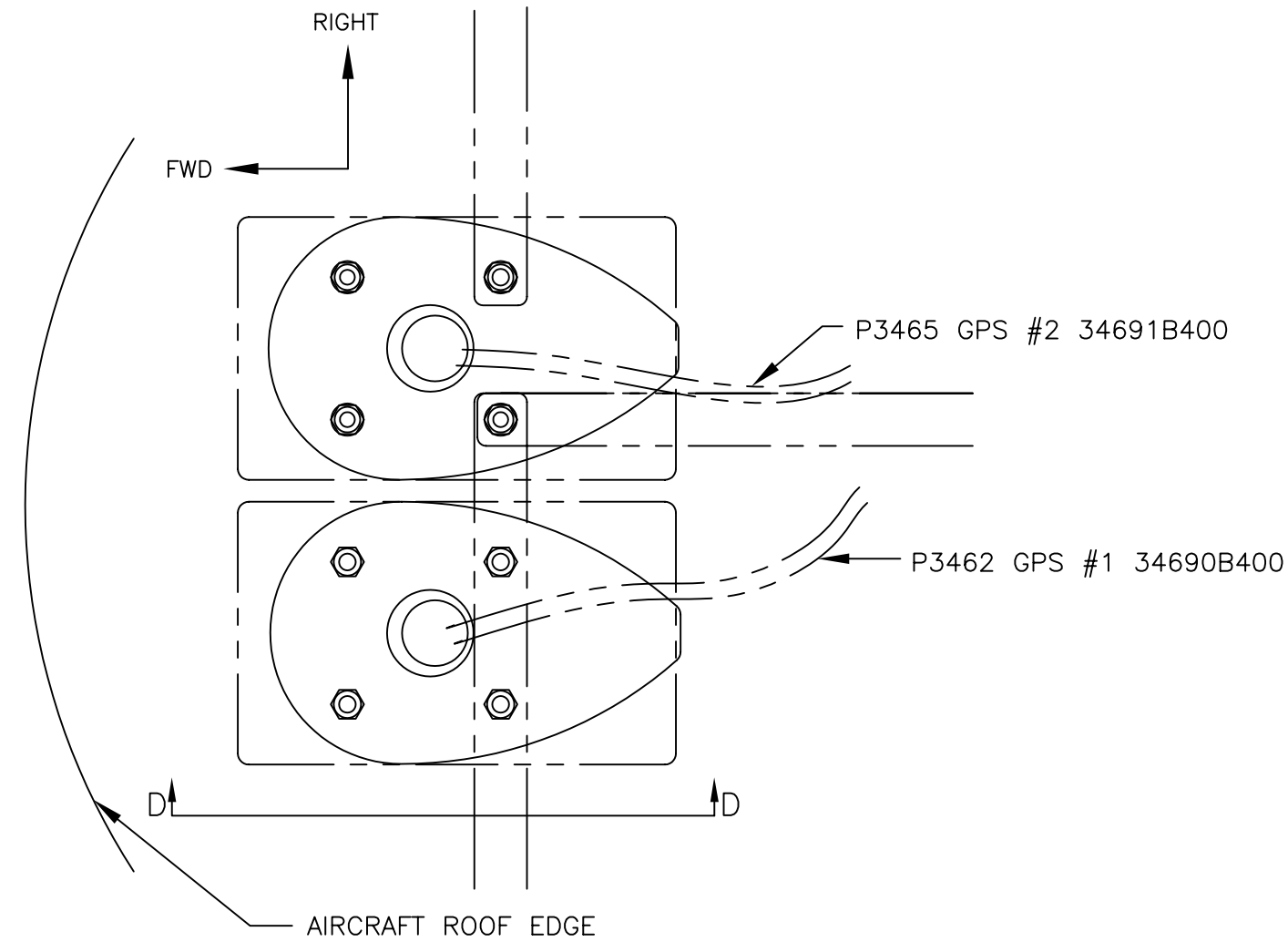


4 2P100001 (REF)  
 1/4 TURN INTERLOCKING FASTENER (4 PLACES)

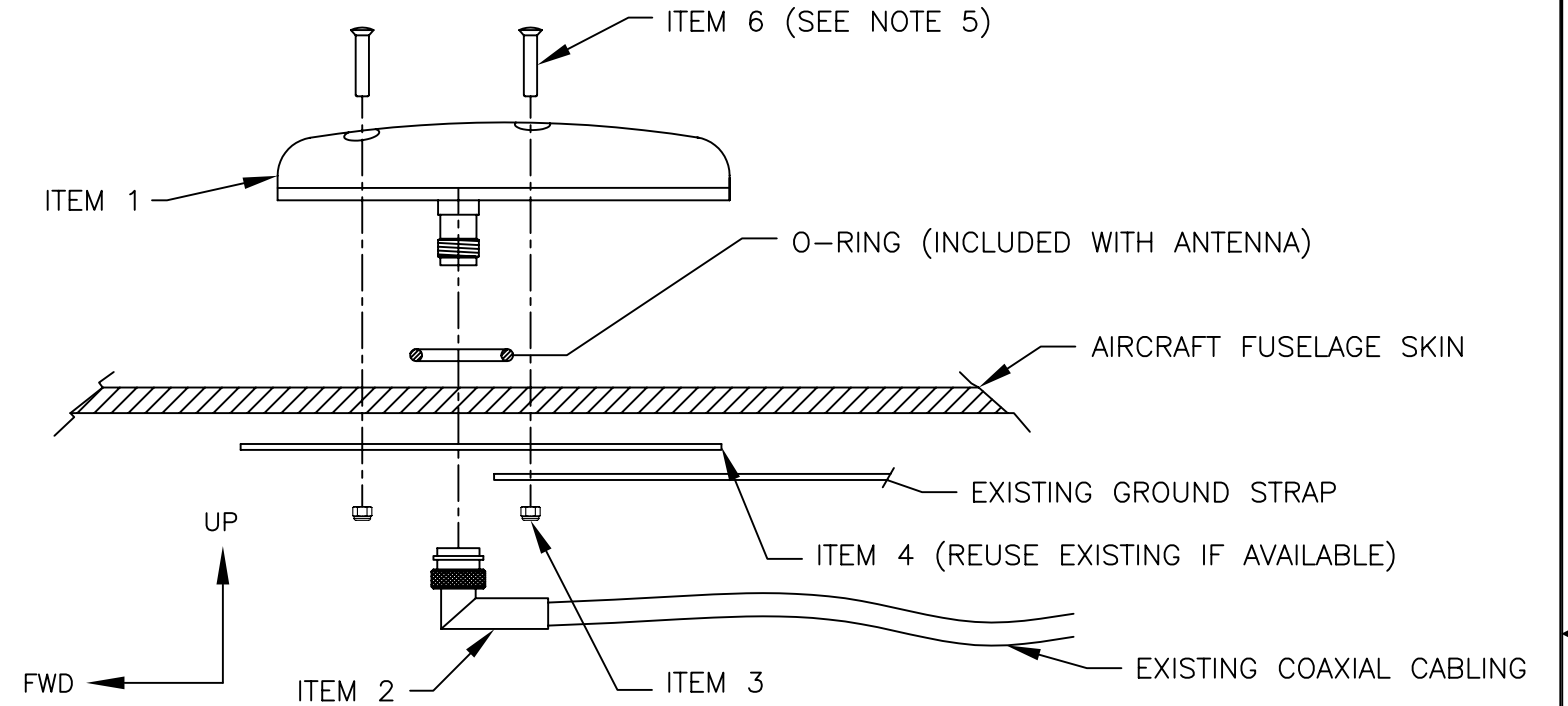
<b>GARMIN</b> <sup>®</sup>			Garmin Ltd. or its subsidiaries c/o Garmin International, Inc. 1200 E. 151st Street Olathe, Kansas 66062 U.S.A.		
SIZE B	DWG. NO.	005-00400-10		REV.	7
SCALE NTS	DER REVIEW REQD	SHT.	4	OF	6

**INSTALLATION NOTES:**

1. REMOVE EXISTING GA56 GPS ANTENNAS, IF INSTALLED. THE EXISTING GA56 ANTENNAS ARE INCLUDED IN THE PREVIOUSLY APPROVED DESIGN. THE GA35 USES THE SAME FOOTPRINT AND REQUIRES NO STRUCTURAL MODIFICATIONS TO INSTALL.
2. INSTALL NEW GA35 GPS/WAAS ANTENNAS AS SHOWN TO EXISTING ANTENNA LOCATIONS. USE ITEM 3 NUTS TO FASTEN EACH ANTENNA IN PLACE. REINSTALL EXISTING GROUND STRAPS.
3. FOR EACH COAXIAL GPS CABLE, REMOVE THE EXISTING BNC CONNECTOR, IF INSTALLED AND REPLACE WITH TNC CONNECTORS, ITEM 2. CONNECT BOTH COAXIAL CABLES TO THEIR RESPECTIVE ANTENNAS.
4. SEAL THE OUTER JOINT BETWEEN THE ANTENNAS AND THE AIRCRAFT FUSELAGE WITH ITEM 5 OR EQUIVALENT.
5. USE ITEM 6, QTY 8, AS A SUBSTITUTE FOR SCREWS PROVIDED WITH ITEM 1.



**VIEW B-B**  
GA 35 INSTALLATION  
TOP VIEW LOOKING DOWN

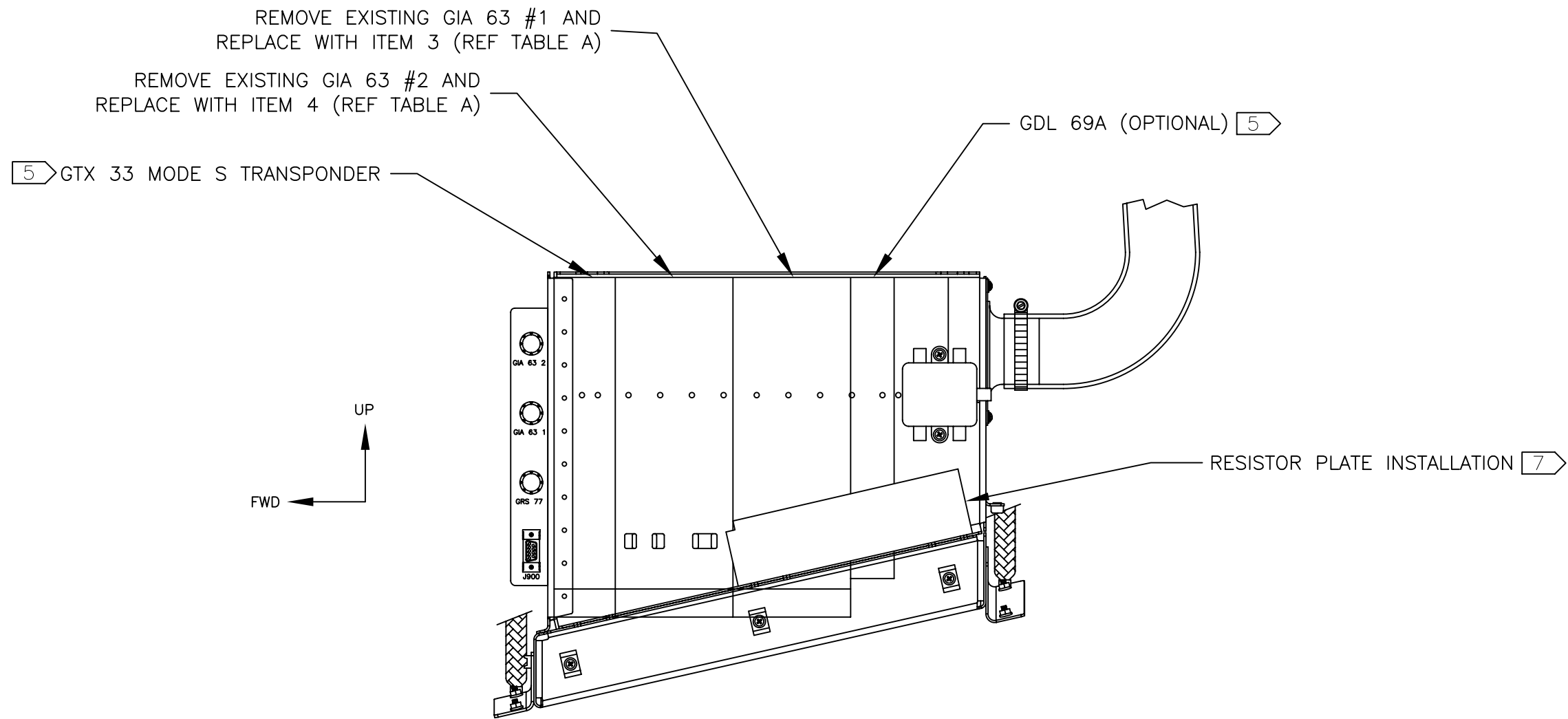


**VIEW D-D**  
GA 35 INSTALLATION  
SIDE VIEW LOOKING RIGHT

8	INSTALLER SUPPLIED	MS24693C56	SCREW, SS, 100° 8-32 x 1.25	6
AR	3M	06586	ADHESIVE, SEALANT 4000, MARINE	5
2	GARMIN	115-00031-00	ANTENNA BACKING PLATE	4
8	INSTALLER SUPPLIED	MS21044N08	NUT, SELF-LOCKING, #8-32	3
2	INSTALLER SUPPLIED	M39012/30-0503	TNC CONNECTOR, 90 DEGREE, DOUBLE CRIMP	2
2	GARMIN or AERO ANTENNA	013-00235-00 or AT575-93GW-TNCF-000-RG-27-NM	GA35 GPS / WAAS ANTENNA	1
QTY	VENDOR	PART NUMBER	DESCRIPTION	ITEM

**GARMIN®** Garmin Ltd. or its subsidiaries  
c/o Garmin International, Inc.  
1200 E. 151st Street  
Olathe, Kansas 66062 U.S.A.

SIZE <b>B</b>	DWG. NO. 005-00400-10	REV. 7
SCALE NTS	DER REVIEW REQD	SHT. 5 OF 6



VIEW C-C  
REMOTE AVIONICS BOX  
VIEW LOOKING RIGHT

<b>GARMIN®</b>		Garmin Ltd. or its subsidiaries c/o Garmin International, Inc. 1200 E. 151st Street Olathe, Kansas 66062 U.S.A.	
SIZE B	DWG. NO. 005-00400-10	REV. 7	
SCALE NTS	DER REVIEW REQD	SHT. 6	OF 6